

'P' Burner Series

The 'P' series is a comprehensive range of packaged burners suitable for a wide variety of applications including large hot water and steam boilers, air heaters and process heating.

The range covers oil, gas and dual fuel versions from 3.4 to 18 MW based upon nett CV of fuel.

PO Oil Burners

These are available in two standard forms for distillate or residual fuel oils but can be configured for other liquid fuels provided that a full specification (viscosity, specific gravity, composition and calorific value) is made available.

PG Gas Burners

In standard form the 'PG' series is configured for natural gas but versions are available for other types of manufactured gas, liquefied petroleum gas (LPG) and other special gases, e.g. biogas.

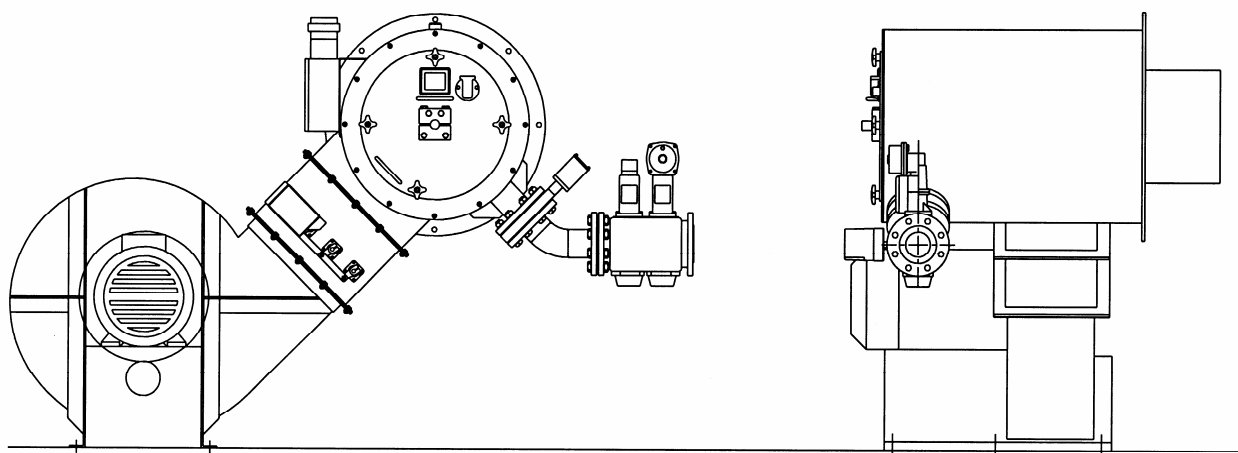
PDF Dual Fuel Burners

These combine the important design characteristics and performance advantages of the 'PO' and 'PG' burners.

In accordance with our uncompromising pursuit of optimum performances, each type of 'P' series burner has its own unique, purpose-designed burner head.

All burners are built to the highest standards of quality and reliability to meet current European Emission Standards, together with those of many other countries. All control systems and safety features comply with relevant burner standards and codes of practice.

Our policy of always seeking to offer the best technology in all areas of system specification. As an example, although other types of fully modulating control system can be fitted by special request, all 'P' series burners now incorporate Autoflame control system as standard. This microprocessor-based system extends the boundaries of modulating burner control by ensuring that the burner operates under optimum conditions at all times, thereby delivering substantial reductions in fuel consumption, operating costs and emissions of carbon dioxide, the principal greenhouse gas. The control system offers unprecedented accuracy in appliance control; when fitted to a boiler, for example, boiler temperature and pressure are not allowed to vary by more than 1°C or 1.5 psig respectively. Options for O₂ Trim, EGA and Variable Speed Control, are also available on request.



WWW.SMARTFLAM.BY

SmartFlam

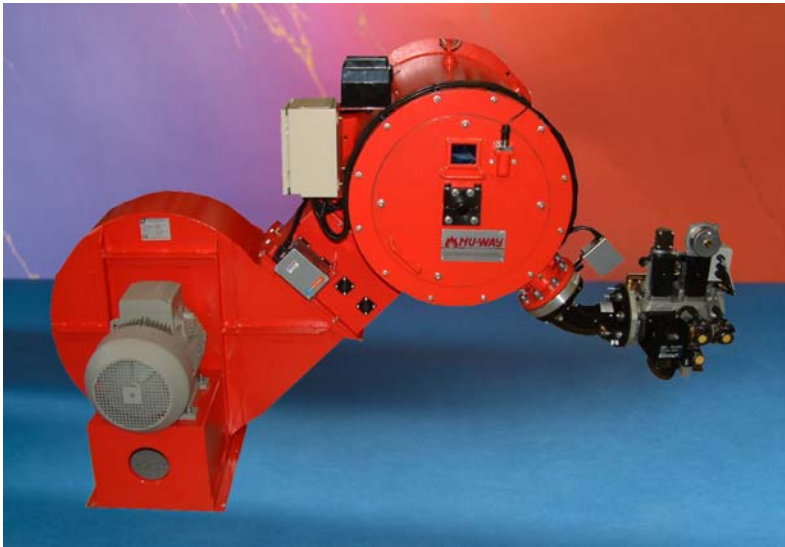
Импортер

в Республику Беларусь

8 (029) 11 915 11

INFO@SMARTFLAM.BY

PG Gas Burner



The PG Series of fully automatic gas burner equipment is offered for industrial boiler and air heater applications.

This versatile range of fully modulating burners is available for Natural Gas. Special requirements on request i.e. Liquid Petroleum Gas / Town Gas.

Each burner system is made up of performance-matched units which together ensure safe, efficient and reliable operation.

POL Light Oil Burner POR Heavy Oil Burner



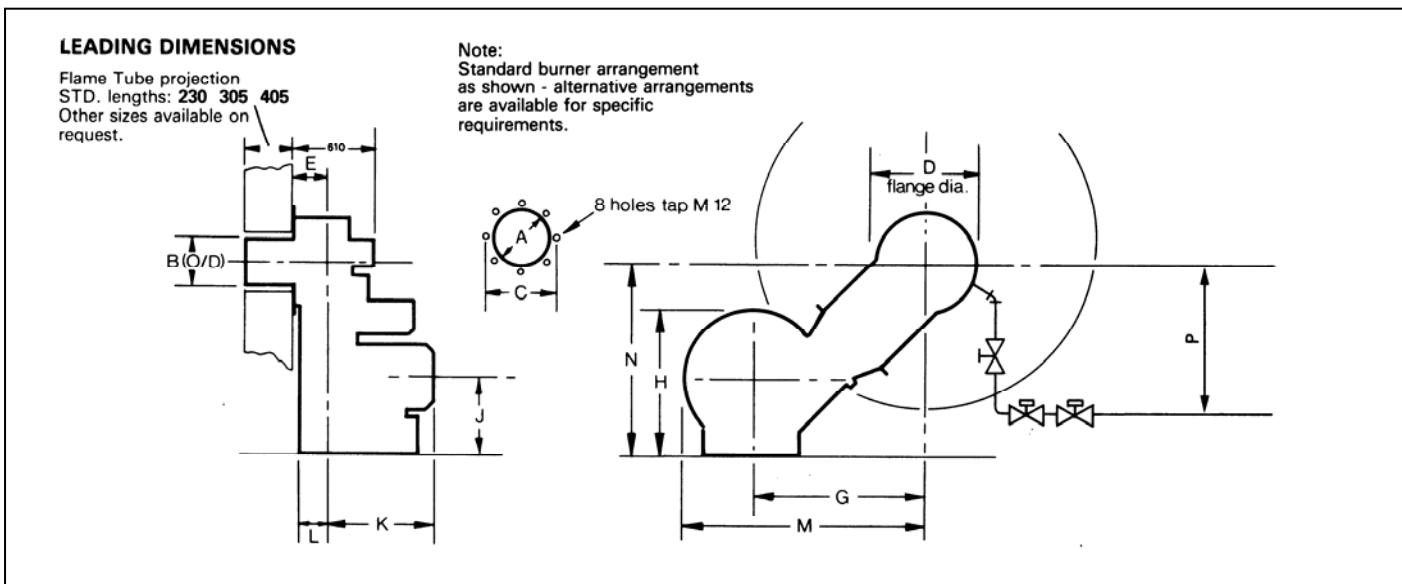
The PO series of fully automatic oil burner equipment is offered for industrial boiler and air heater applications. This versatile range of fully modulating burners is available in two forms, Distillate or Residual fuels.

Each burner system is made up of performance-matched units which together ensure safe, efficient and reliable operation.

Options for dual fuel between Natural Gas / Light Oil and Residual Oil also available.

Other gases and specialist fuels available on request.

'P' Burner Series

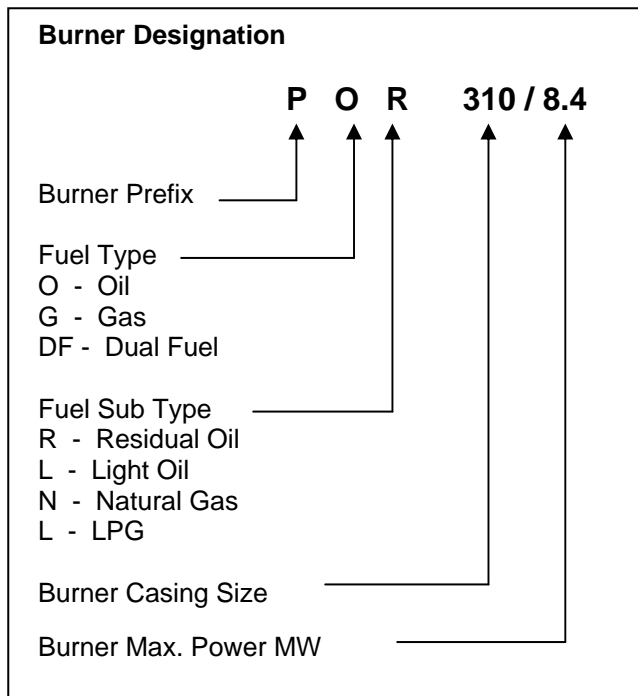


Burner	A	B	C	D	E	G	H	J	K	L	M	N	P	Burner	A	B	Burner	A	B	
PDF160/	3.7	375	334	610	660	276	965	855	500	640	195	1395	1025	900	POL160/	375	334	PG160/	375	334
	4.0	375	334	610	660	276	965	855	500	640	195	1395	1025	900		375	334		375	334
	4.4	375	334	610	660	276	965	855	500	640	195	1395	1025	900		375	334		375	334
	4.8	375	334	610	662	276	965	/55	500	640	195	1395	1025	900		375	334		375	334
PDF250/	5.1	375	334	672	724	304	925	855	475	640	195	1355	1025	900	POL250/	375	334	PG250/	400	359
	5.5	375	334	672	724	304	925	855	475	640	195	1355	1025	900		375	334		400	359
	6.0	375	334	672	724	304	925	/55	475	640	195	1355	1025	900		375	334		400	359
	6.2	400	359	672	724	304	925	855	475	640	195	1355	1025	900		400	359		400	359
	6.6	400	359	672	724	304	925	855	475	640	195	1355	1025	900		400	359		400	359
	7.0	400	359	672	724	304	1070	915	495	660	215	1520	1165	900		400	359		400	359
7.3	400	359	672	724	304	1070	915	495	660	215	1520	1165	900	400	359	400	359			
PDF310/	7.7	425	385	672	724	334	1076	920	495	660	215	1526	1275	900	POL310/	425	385	PG 310/	450	410
	8.0	425	385	672	724	334	1076	920	495	660	215	1526	1275	900		425	385		450	410
	8.4	425	385	672	724	334	1076	920	495	660	220	1526	1275	900		425	385		450	410
	8.8	425	385	672	724	334	1165	1110	660	665	220	1640	1400	900		425	385		450	410
	9.2	425	385	672	724	334	1165	1110	660	665	260	1640	1400	900		425	385		450	410
PDF400/	9.5	450	410	672	724	334	1155	1115	660	805	260	1635	1410	975	POL400/	450	410	PG 400/	450	410
	9.9	450	410	672	724	334	1155	1115	660	805	260	1635	1410	975		450	410		450	410
	10.3	450	410	672	724	334	1155	1115	660	805	260	1635	1410	975		450	410		450	410
	10.6	450	410	672	724	334	1155	1115	660	805	260	1635	1410	975		450	410		450	410
	11.0	450	410	672	724	334	1155	1115	660	805	260	1635	1410	975		450	410		450	410
	11.4	450	410	672	724	334	1155	1115	660	805	260	1635	1410	975		450	410		450	410
	11.7	450	410	672	724	334	1155	1115	660	805	260	1635	1410	975		450	410		450	410
PDF490/	12.1	475	436	672	724	334	1155	1115	660	805	260	1635	1410	975	POL490/	450	410	PG 490/	475	436
	12.5	475	436	672	724	334	1155	1115	660	805	260	1635	1410	975		450	410		475	436
	12.8	475	436	672	724	334	1205	1205	710	800	235	1735	1400	975		450	410		475	436
	13.2	475	436	672	724	334	1205	1205	710	800	235	1735	1400	975		475	436		475	436
	13.6	475	436	672	724	334	1205	1205	710	800	235	1735	1400	975		475	436		475	436
	13.9	475	436	672	724	334	1205	1205	710	800	235	1735	1400	975		475	436		475	436
	14.3	475	436	672	724	334	1205	1208	710	800	235	1735	1400	975		475	436		475	436
	PDFL PO/PG 575/660	Available on application														WWW.SMARTFLAM.BY				



Импортер
в Республику Беларусь
8 (029) 11 915 11 INFO@SMARTFLAM.BY

'P' Burner Series



Burner Designation	Output MW
160 / 3.7	3.3
160 / 4.0	3.6
160 / 4.4	3.9
160 / 4.8	4.3
250 / 5.1	4.6
250 / 5.5	5.4
250 / 6.0	5.4
250 / 6.2	5.6
250 / 6.6	5.9
250 / 7.0	6.3
250 / 7.3	6.6
310 / 7.7	6.9
310 / 8.0	7.2
310 / 8.4	7.6
310 / 8.8	7.9
310 / 9.2	8.3
400 / 9.5	8.5
400 / 9.9	8.9
400 / 10.3	9.3
400 / 11.0	9.9
400 / 11.4	10.3
400 / 11.7	10.5
490 / 12.1	10.9
490 / 12.5	11.2
490 / 12.8	11.5
490 / 13.2	11.9
490 / 13.6	12.2
490 / 13.9	12.5
490 / 14.3	12.9
575 / 14.7	13.2
575 / 15.0	13.5
575 / 15.4	13.9
575 / 15.8	14.2
575 / 16.1	14.5
575 / 16.5	14.9
575 / 16.9	15.2
660 / 17.2	15.5
660 / 17.6	115.9
660 / 18.0	16.2
660 / 18.3	16.5
660 / 18.7	16.9
660 / 19.0	17.1
660 / 19.4	17.5
660 / 20.0	18.0

Autoflame

Autoflame MMk 5 Features & Benefits:

- Independently controlled fuel & air positioning motors with an accuracy of 0.1 of an angular degree
- 3 separate fuel curves
- 3 servo drives
- 2 shared inverter interface channels
- Selectable trim channel (damper or inverter interface)
- 20 x 2 line LCD display
- Error diagnostic codes displayed
- Single point change facility for commissioned fuel/air ratio
- User defined optimum ignition position
- Internal 3 term PID control to required set-point for both pressure & temperature
- Software adjustable thermostat/pressure stat facility
- Second set-point user adjustable
- Intelligent boiler sequencing for both steam & hot water
- Fuel flow metering
- Hand/auto/low flame hold facilities
- 0-5 V input for external load control
- Password protection, user configurable options & parameters
- IR COM's port for upload/download of commissioned data and operating history
- All systems data exports via gateway
- Internal calendar clock display and logging functions